

# Monitoring HIV/STI Services for Key Populations

**PANCAP Webinar, November 11th, 2020**

**Monica Alonso MD PhD MPH**

**HIV, Hepatitis, TB, and STI Unit**

**Pan American Health Organization.**

# CONTENTS

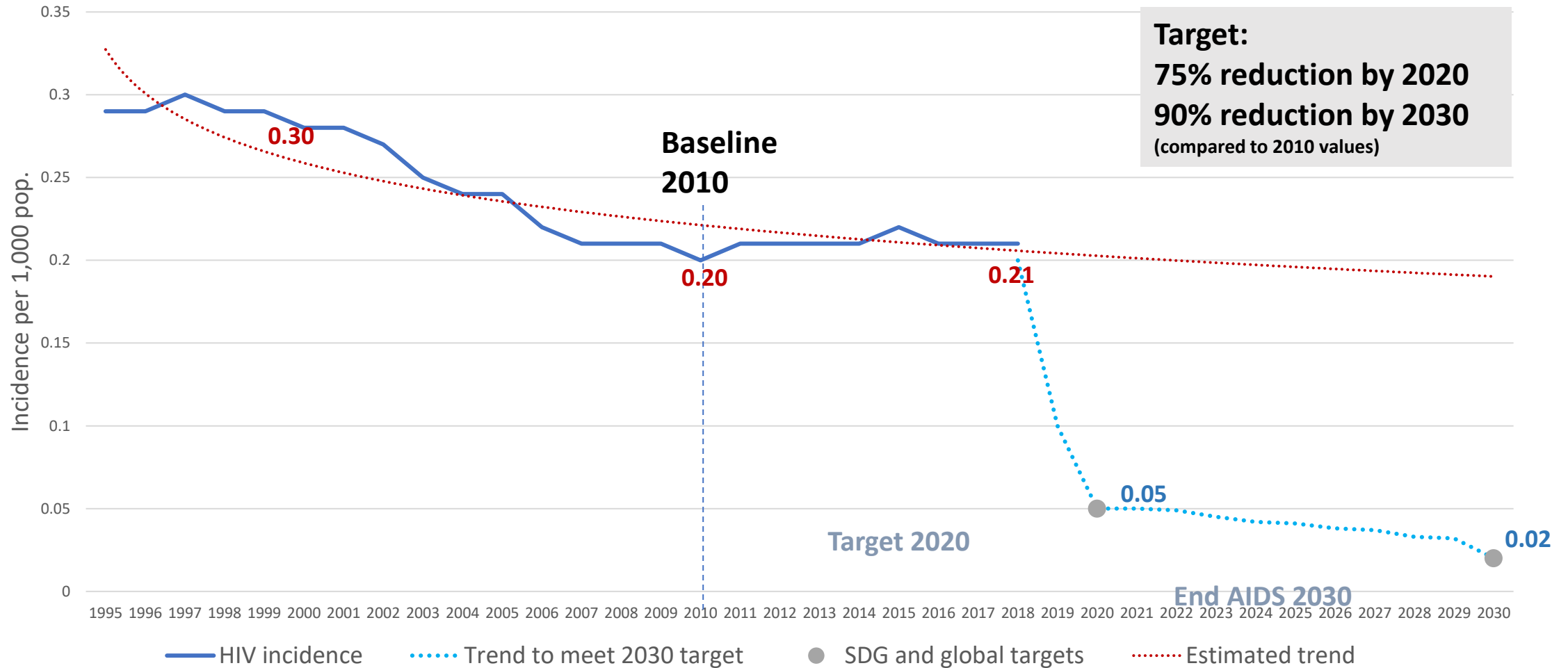
**I. Ending AIDS by 2030**

**II. Why focus on key populations?**

**III. What is considered a key population for monitoring?**

**II. PAHO Framework for Monitoring HIV/STI Services for Key Populations**

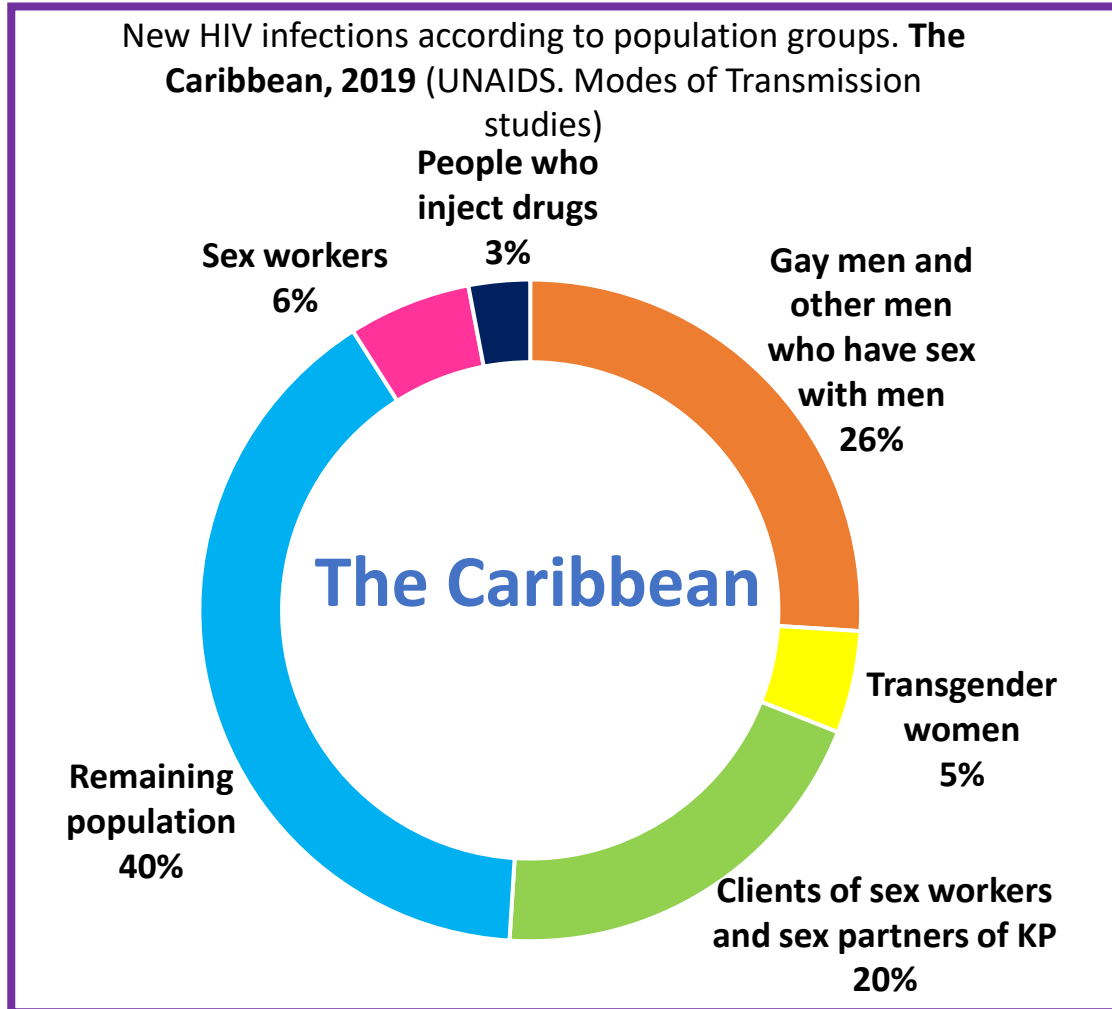
# HIV incidence per 1000 population, 2030 forecast and targets for Ending AIDS, in Latin America and the Caribbean, 1995-2030



Source: PAHO. Developed from UNAIDS Spectrum HIV estimates 2020.

# Why Focus on Key Populations

Account for most new HIV infections in The Caribbean



Face barriers to access to health services and suffer stigma and discrimination.



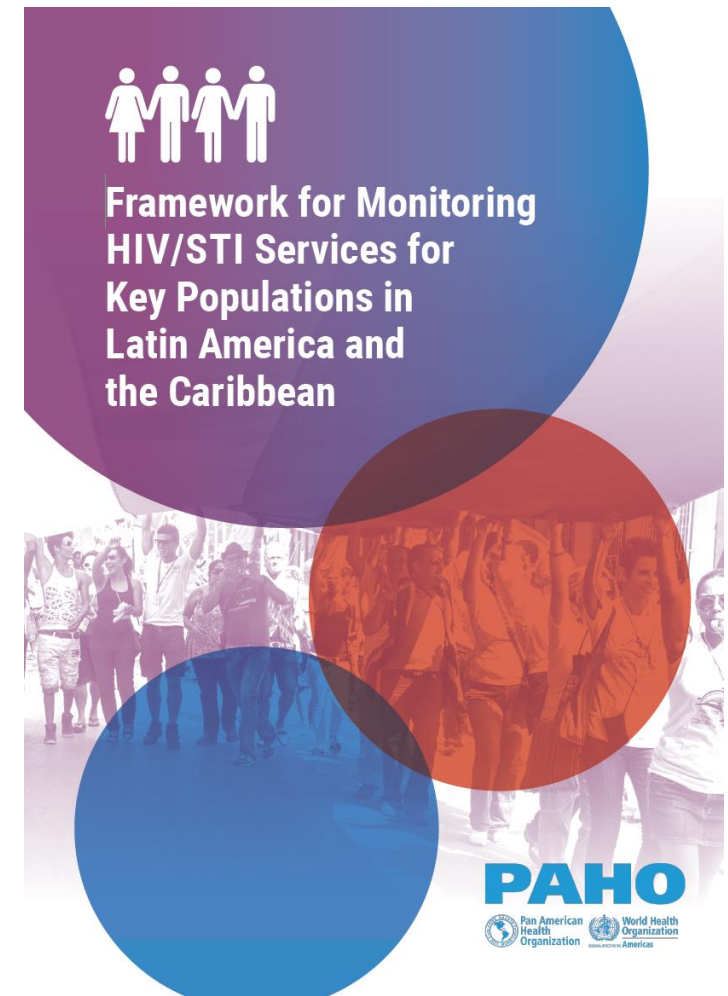
# What is considered “Key Population?”

*People with a key role in the HIV epidemic, due to specific practices that pose an increased risk of HIV infection and legal and social contexts that accentuate their social vulnerability and access to services*

- "Identity" and "sexual orientation" is **DIFFERENT** from "sexual practice".
- For monitoring: The interest is in defining the key population by **PRATICE- BASED** rather than by **AUTO-IDENTIFICATION** (gender or sexual orientation).

# PAHO “Monitoring Framework”

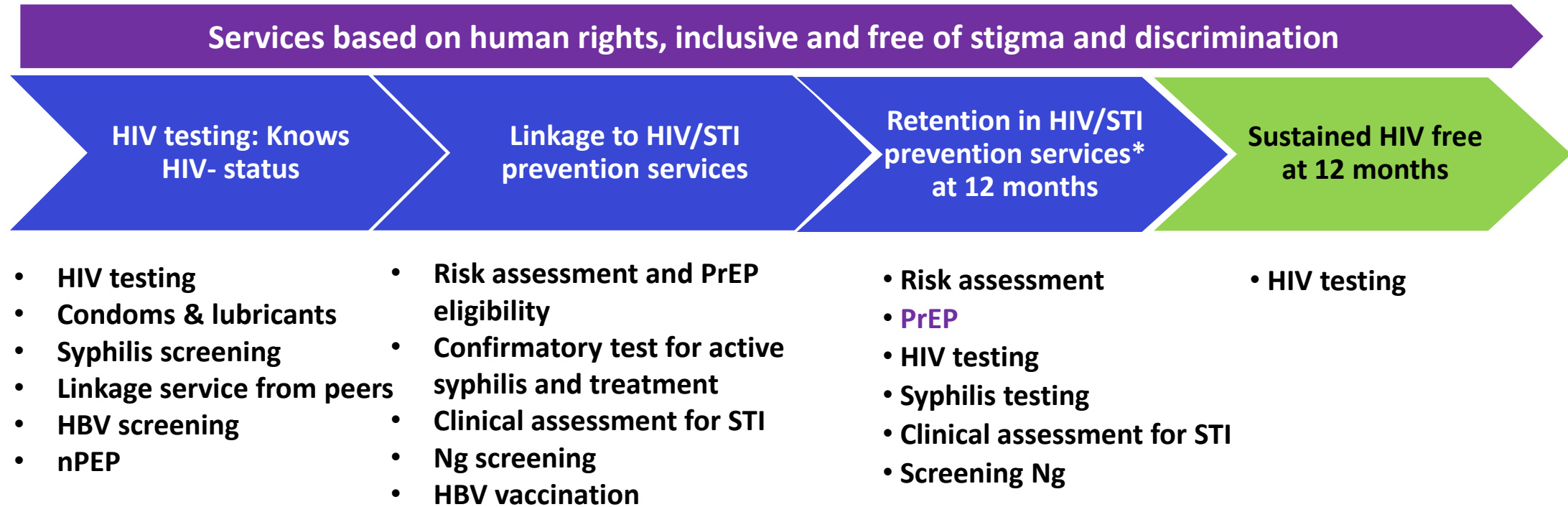
- Operationalizing variables for key population groups
- Definition of essential HIV and STI-related services to be offered to KP.
- Cascades of prevention and care.
- PrEP cascade
- Indicators for monitoring HIV/STI services



# How to operationalize the key population variables

- 1. Which sex was assigned to you at birth: male, female, intersex, other?**
- 2. In the last 12 months, who have you had sexual relations with? (Mark all that apply)**
- 3. In the last 12 months, have you exchanged sex for money?**
- 4. In the last 12 months, have you shared a needle and/or syringe to inject substances?**
- 5. Do you consider yourself to be a...? (Read all options)**

# HIV/STI proxy services of the Basic Package for HIV Negative Key Population Groups



**\*Follow up:** every 3 months PrEP users; non-PrEP users: every 6 months (FSW)-12 months (HSH)

All the services included here are WHO GRADE recommendations

Note: Specific services for drug injectors, trans women, etc. are not included ...

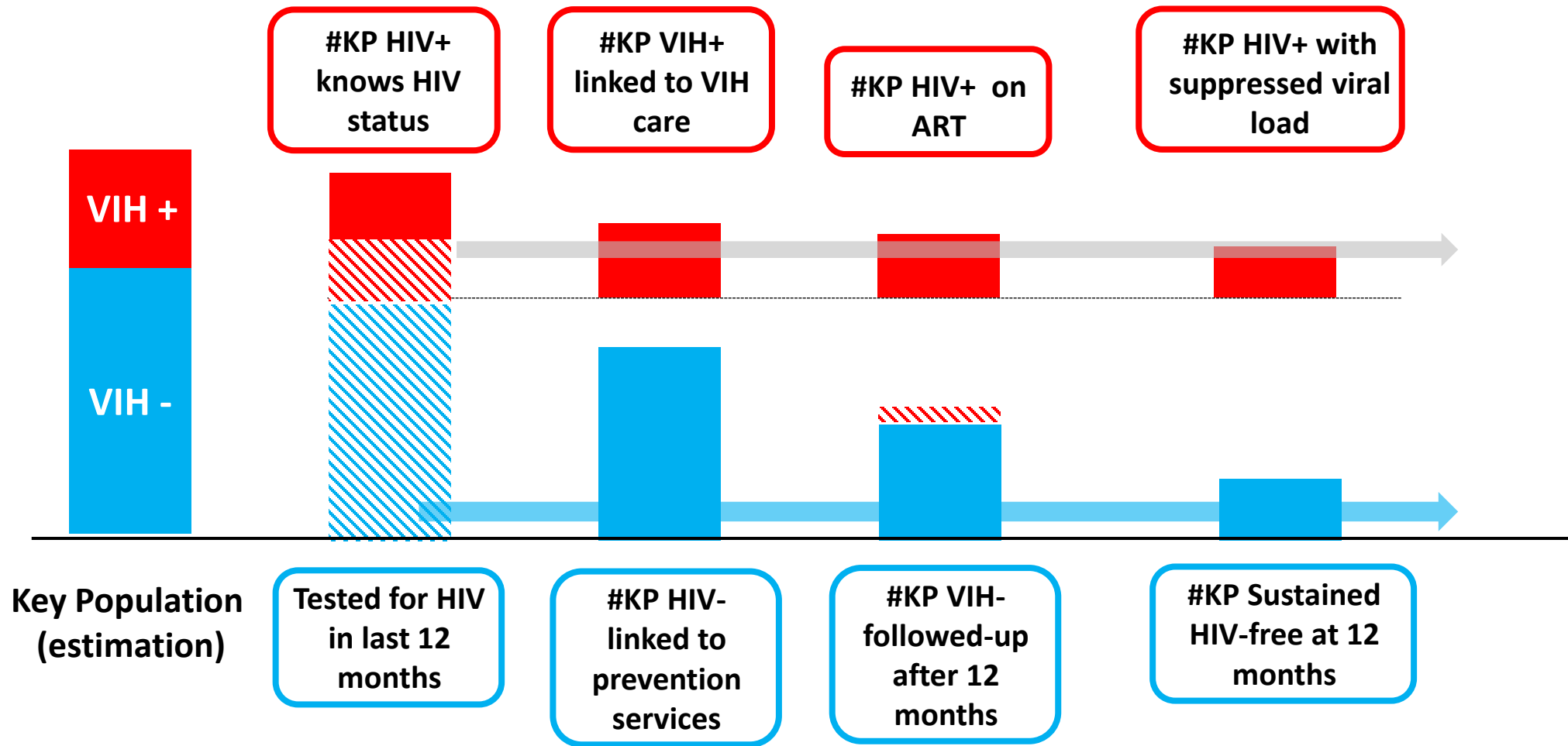


# Assessment of Substantial risk for HIV infection

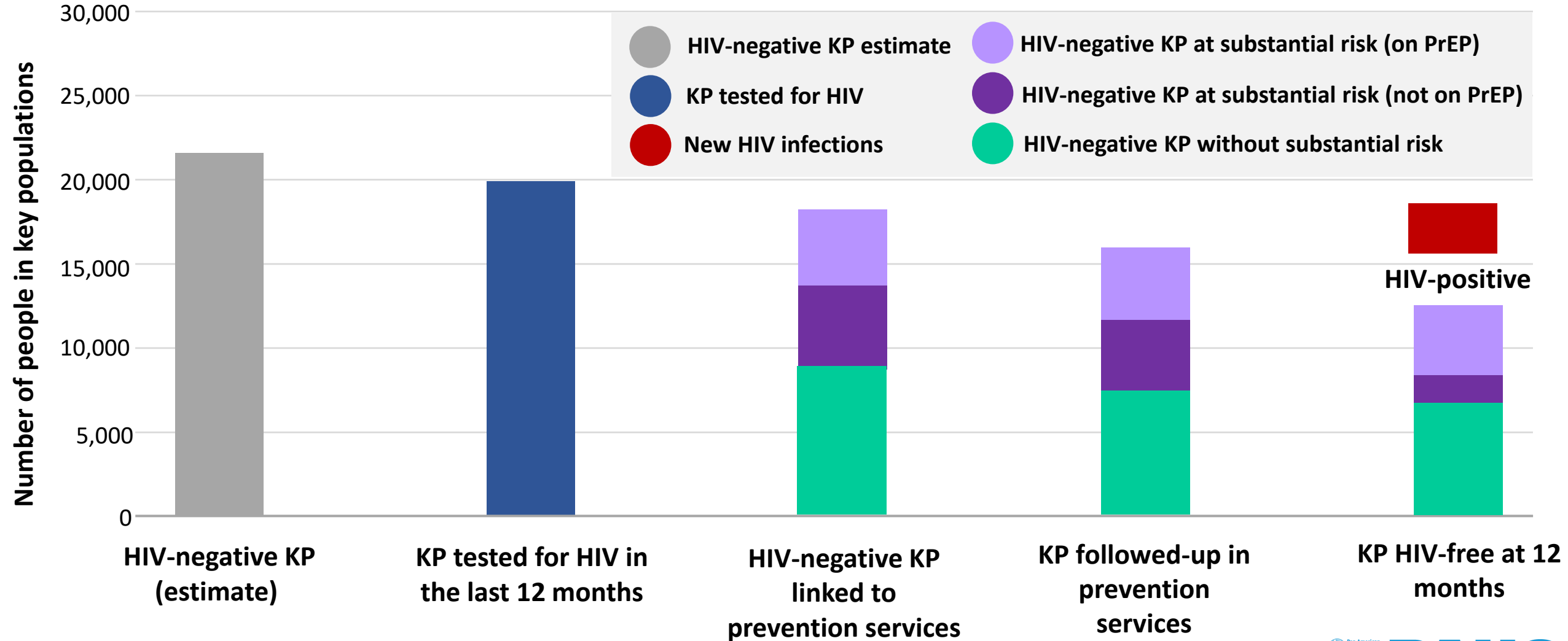
## **Substantial risk for HIV infection if, in the last 6 months:**

- Vaginal/anal sex without condom with more than one partner
- STI
- Previous use or requested PEP or PrEP
- Sexual partner: HIV positive (not undetectable) or with a HIV risk factor.
- Shared needles/syringes.

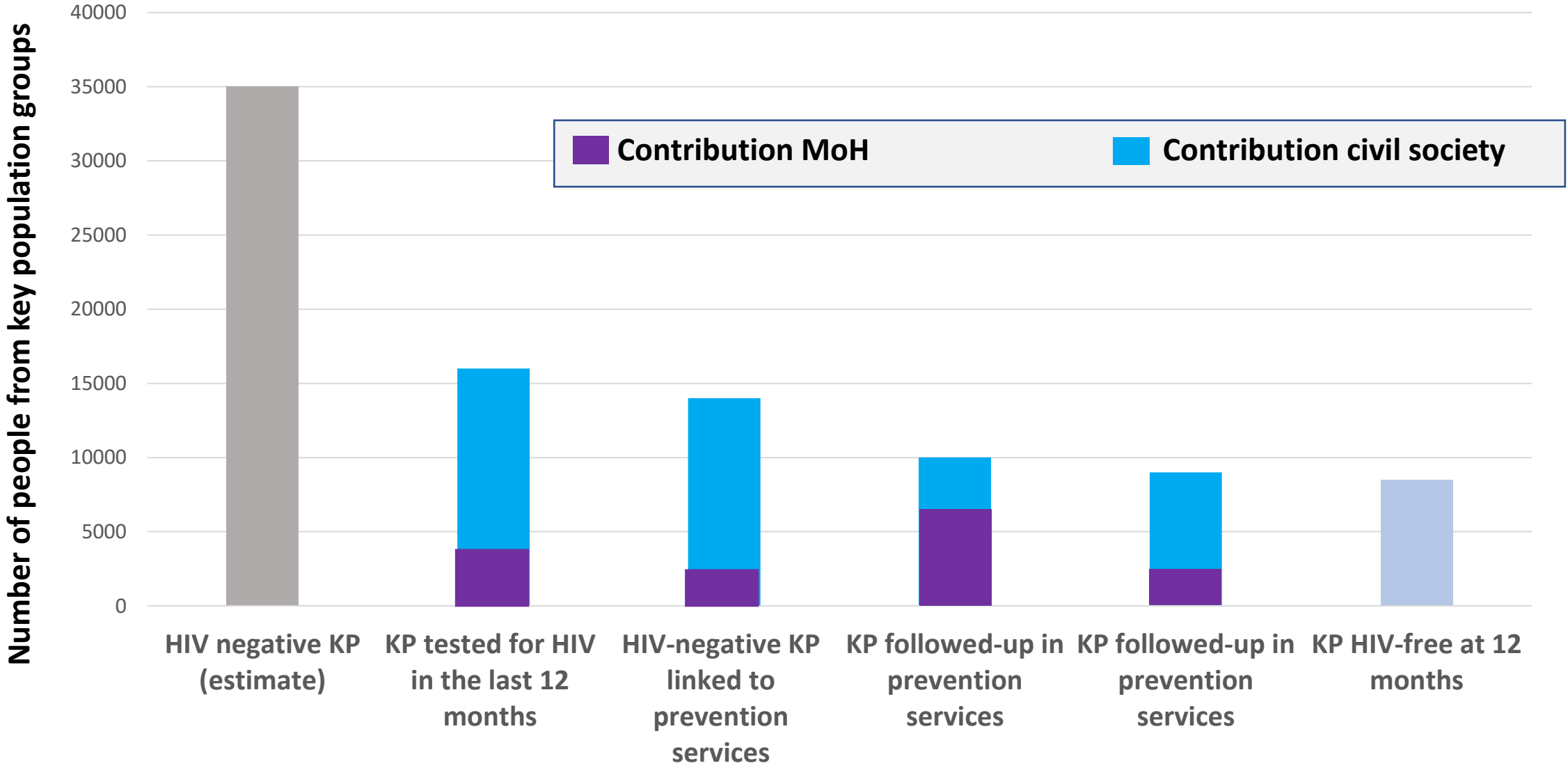
# PAHO Monitoring Framework



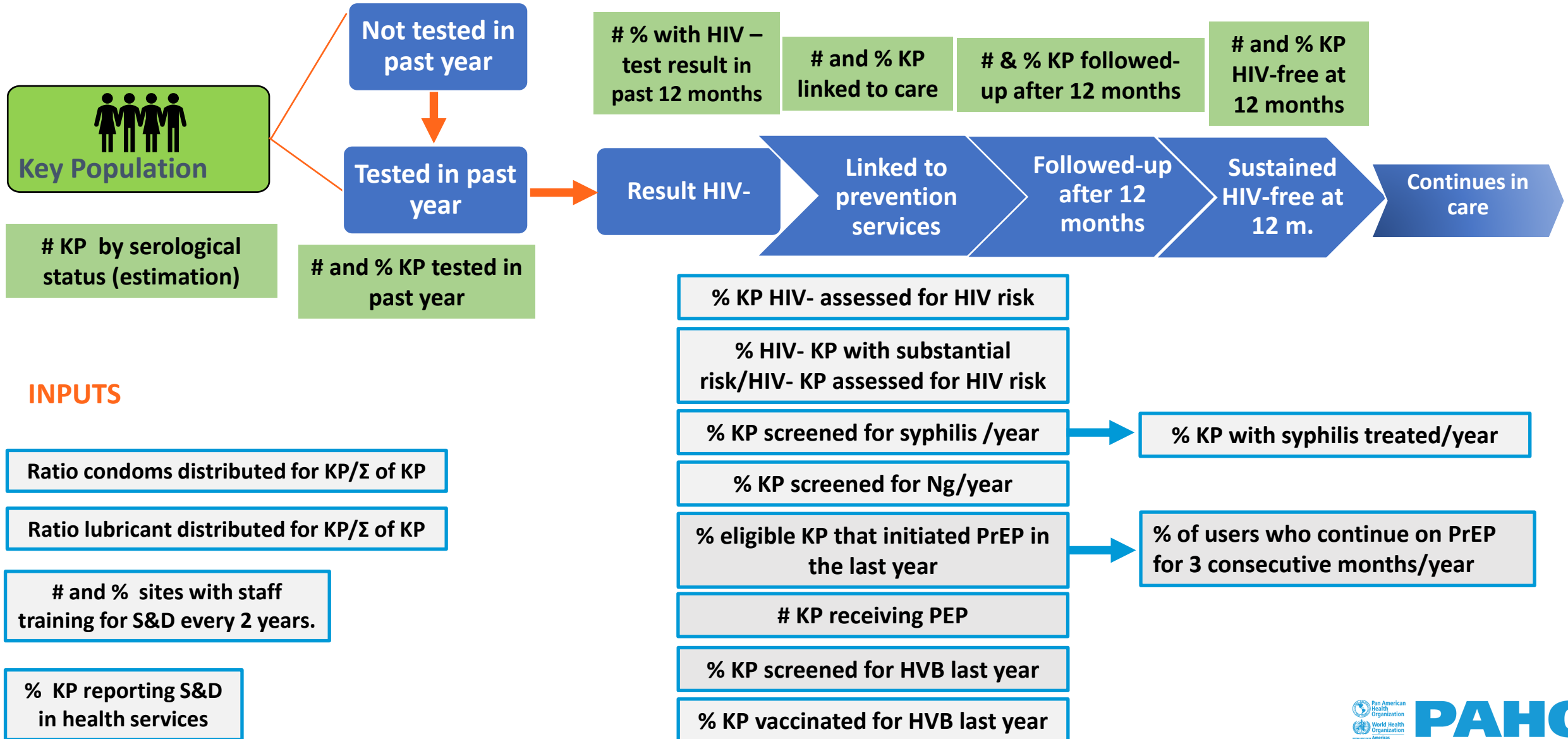
# Example of the HIV Prevention cascade for Services Offering PrEP



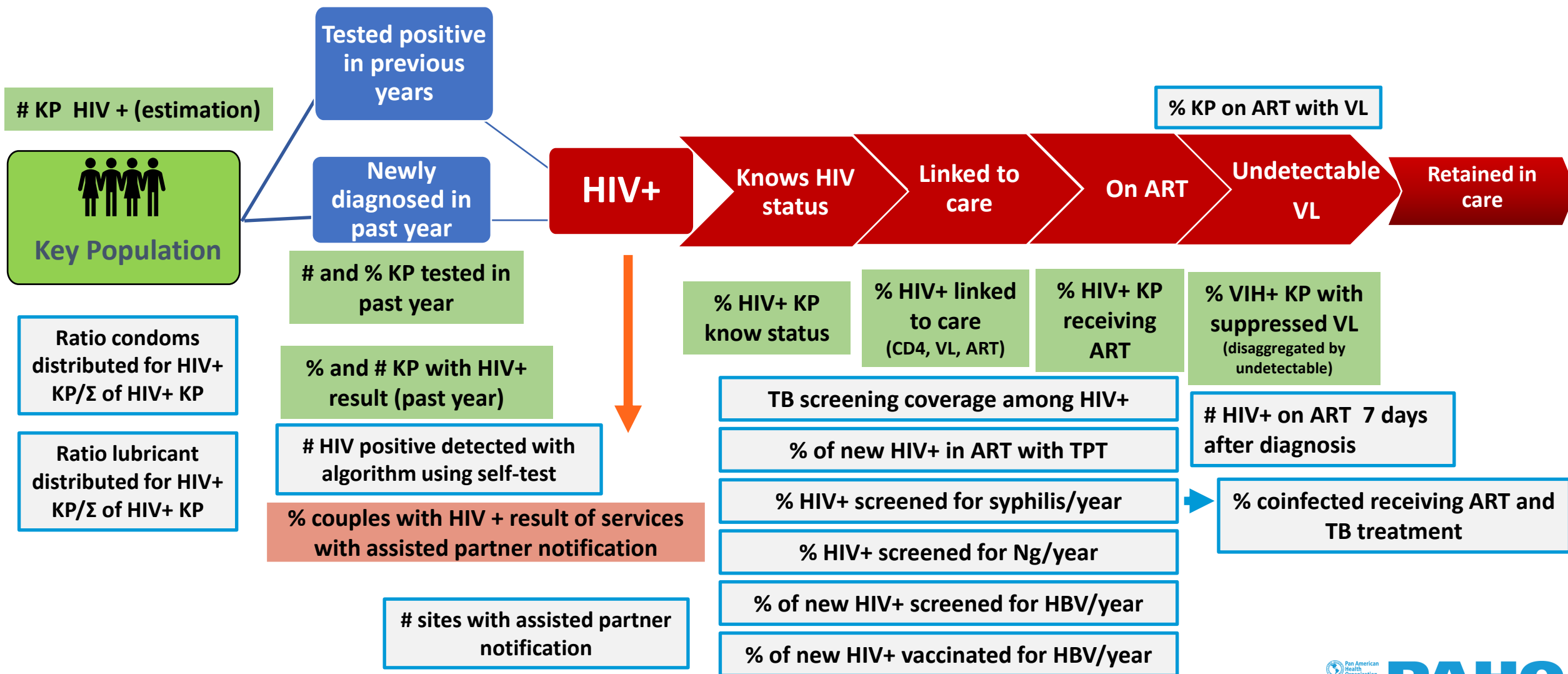
# Example of the HIV Prevention cascade disaggregated by provider



# Indicators for monitoring HIV services for HIV Negative Key Population Groups

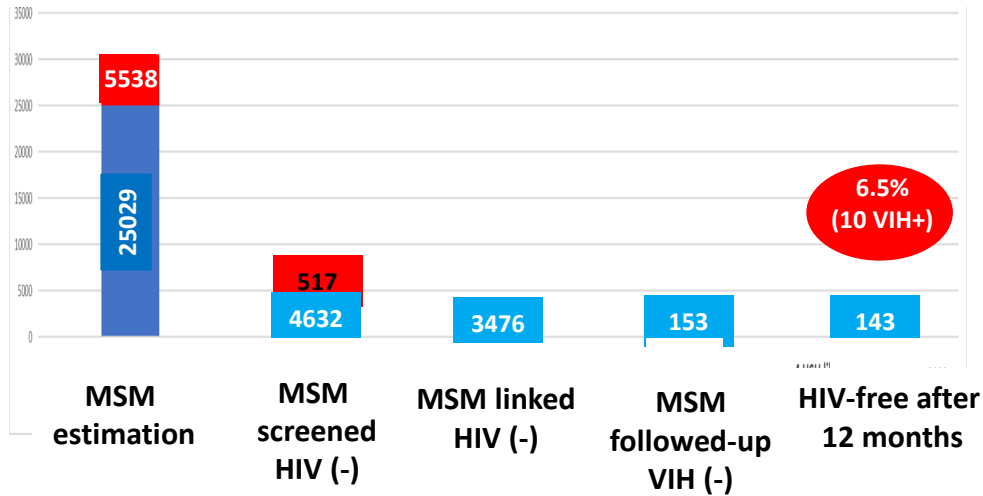


# Indicators for monitoring key HIV/STI services VIH/ITS for HIV Positive Key Population Groups

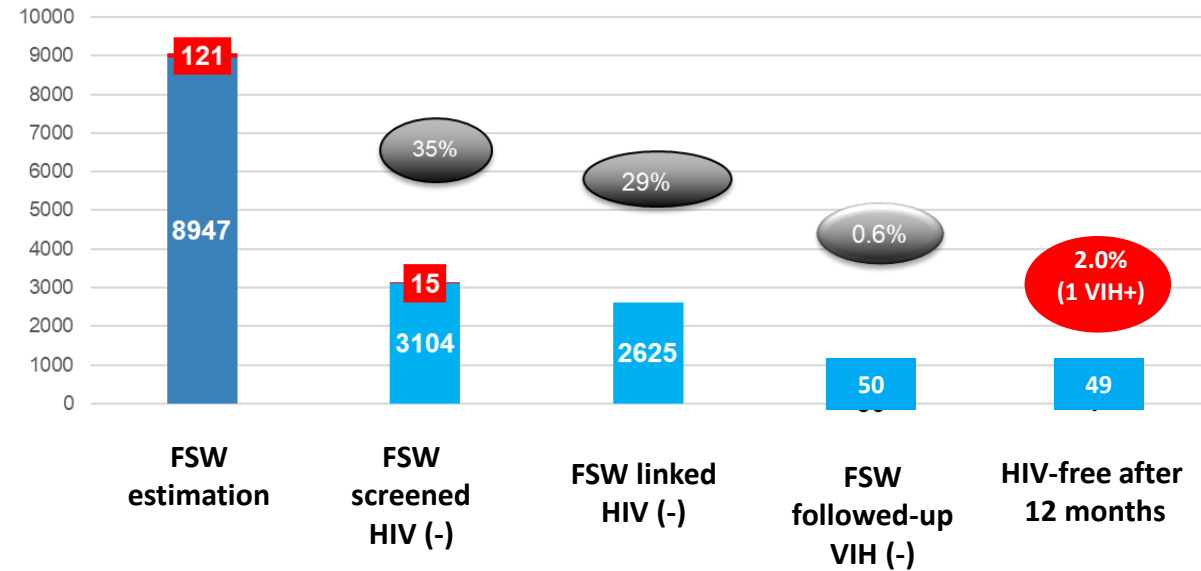


# Prevention Cascades per Key Population Group, country example

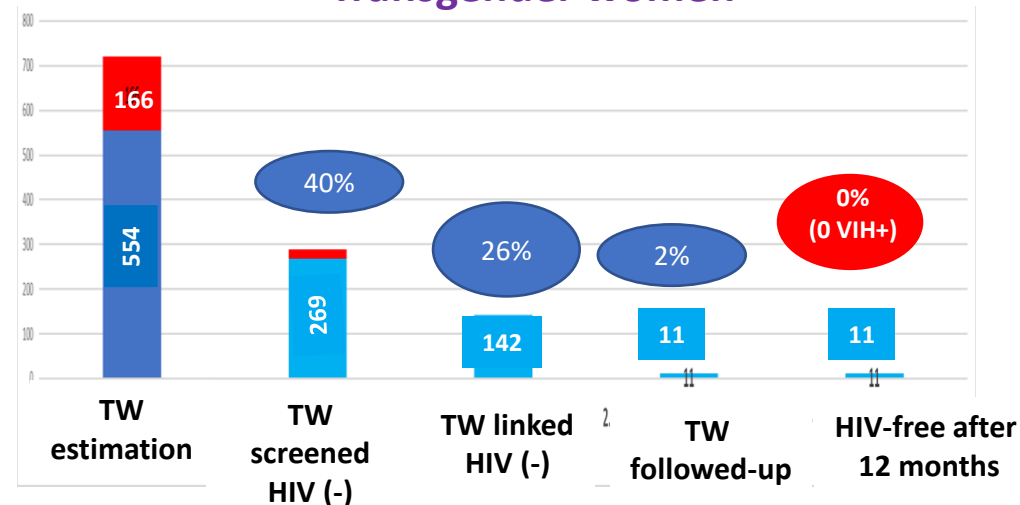
## MSM



## Female sex workers



## Transgender women



Source: Developed by PRONASIDA, Ministry of Health, Paraguay

# Monitoring of HIV testing services

- Countries are implementing various HIV testing strategies
- It is important to monitor these efforts, evaluate for improvement or changes, and establish yearly targets for screening and positivity.

## Example of disaggregation of screening targets and positivity per strategy for MSM in 2021

HIV screening strategy	Estimated people reached	Estimated positivity rate	HIV positive diagnosed
PrEP New initiators	1,730	8%	138
Assist. part. Notif.	2,623	13%	341
Self-testing	2,235*	5%*	112
Current strategies	6,500	8%	520
<b>TOTAL</b>	<b>13,088</b>	<b>8.5%</b>	<b>1,111</b>



# Take away messages

Routine information systems can and should be used for measuring coverage and quality of services for KP.

Disaggregated analysis can support information on contribution of civil society to KP services.

The PAHO framework is a tool supporting the monitoring of service delivery models and

of quality and results of services (PrEP, self testing APN...)

## Framework developed by:

- **Monica Alonso**
- **Maeve Brito de Melo**
- **Bernardo Nuche**

## Contributions from:

- **Giovanni Ravasi**
- **Marcelo Vila**
- **Manuel Da Quinta**
- **Massimo Ghidinelli**
- **Pedro Avedillo**
- **Yannis Mameletzis**
- **Colleagues from PAHO, UNAIDS and Global Fund**



ACKNOWLEDGMENTS