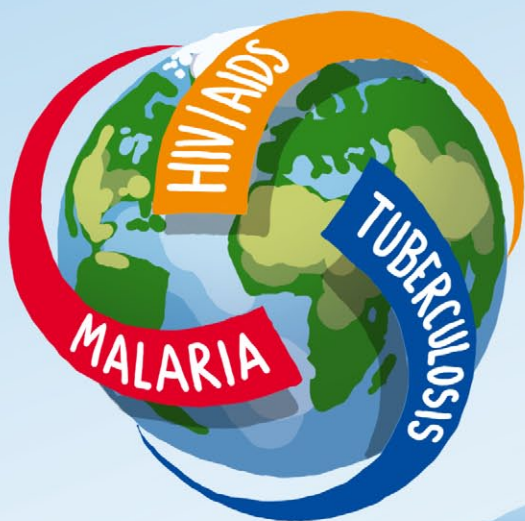


THE GLOBAL FUND NEW FUNDING MODEL

WHAT IS IT?

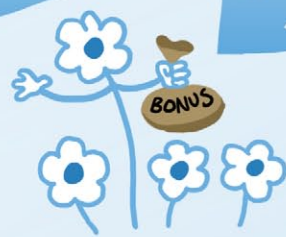


THE GLOBAL FUND HAS DESIGNED A FUNDING MODEL THAT MAKES A **BIG IMPACT** ON THE THREE DISEASES WITH MORE FOCUSED INVESTMENT.

FEATURES INCLUDE:



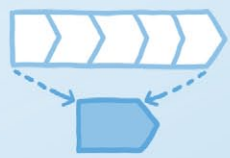
PREDICTABLE FUNDING



REWARDS AMBITIOUS VISION



FLEXIBLE TIMINGS



STREAMLINED PROCESS

BIGGER IMPACT!

TELL ME MORE!



...NEXT



BIGGER IMPACT!



PREDICTABLE FUNDING!

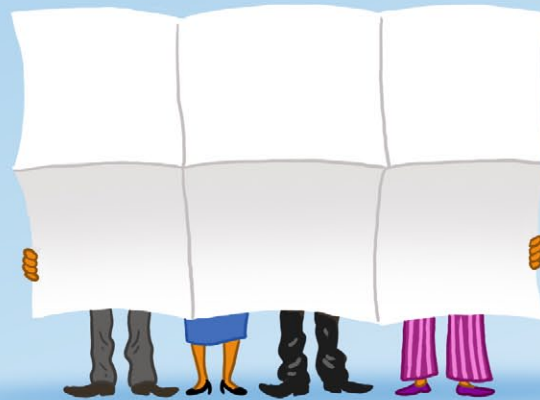


REWARDS AMBITIOUS VISION!

GREAT PROGRAM!

YEAH, THIS WILL MAKE A **BIG** IMPACT!

...AND IT IS BASED ON THEIR NATIONAL STRATEGIC PLAN!



...IT DESERVES A REWARD!



FLEXIBLE TIME!

APPLICATION



DEADLINE IS NOW!

...RELAX!

...WE'VE GOT TIME!



STREAMLINED PROCESS!

BEFORE: 2 YEARS

NOW: 11 MTHS



HOW DOES THE NEW FUNDING MODEL WORK?

A TREND / PROBLEM / SITUATION RELATED TO MALARIA, HIV/AIDS OR TUBERCULOSIS IS IDENTIFIED...



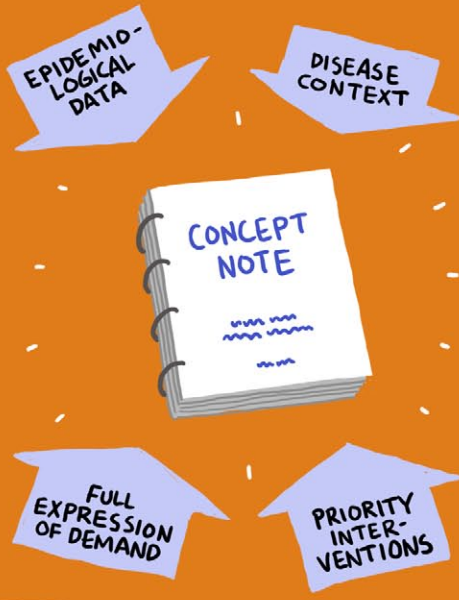
THE COUNTRY COORDINATING MECHANISM DISCUSSES THE STRATEGIC PLAN WITH OTHER PLAYERS IN ORDER TO DEVELOP A FUNDING APPLICATION



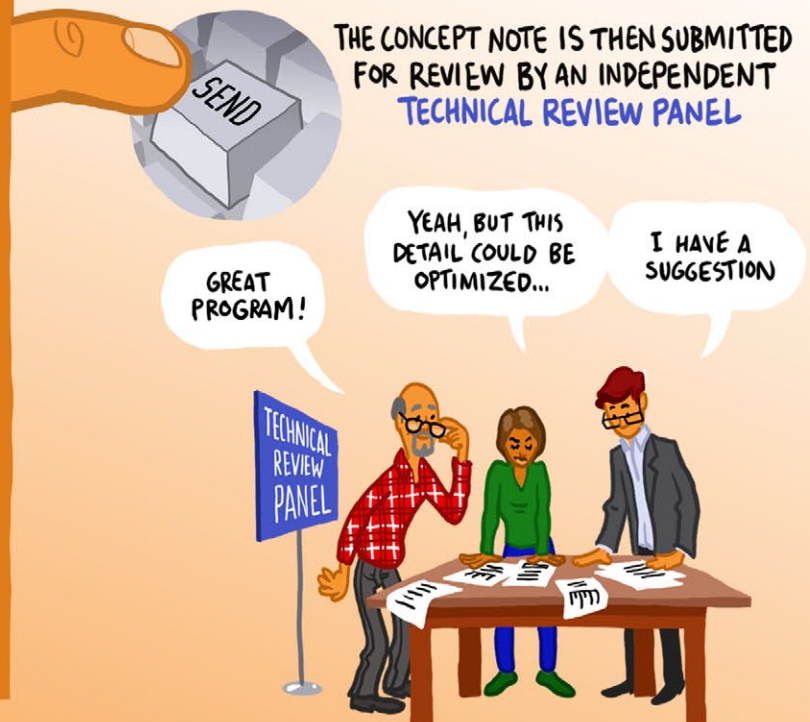
THE INPUTS FROM THE COUNTRY DIALOGUE IS COLLECTED AND MADE A CONCEPT NOTE



THE **CONCEPT NOTE** DESCRIBES THE PROPOSAL IN DETAIL:



THE CONCEPT NOTE IS THEN SUBMITTED FOR REVIEW BY AN INDEPENDENT **TECHNICAL REVIEW PANEL**



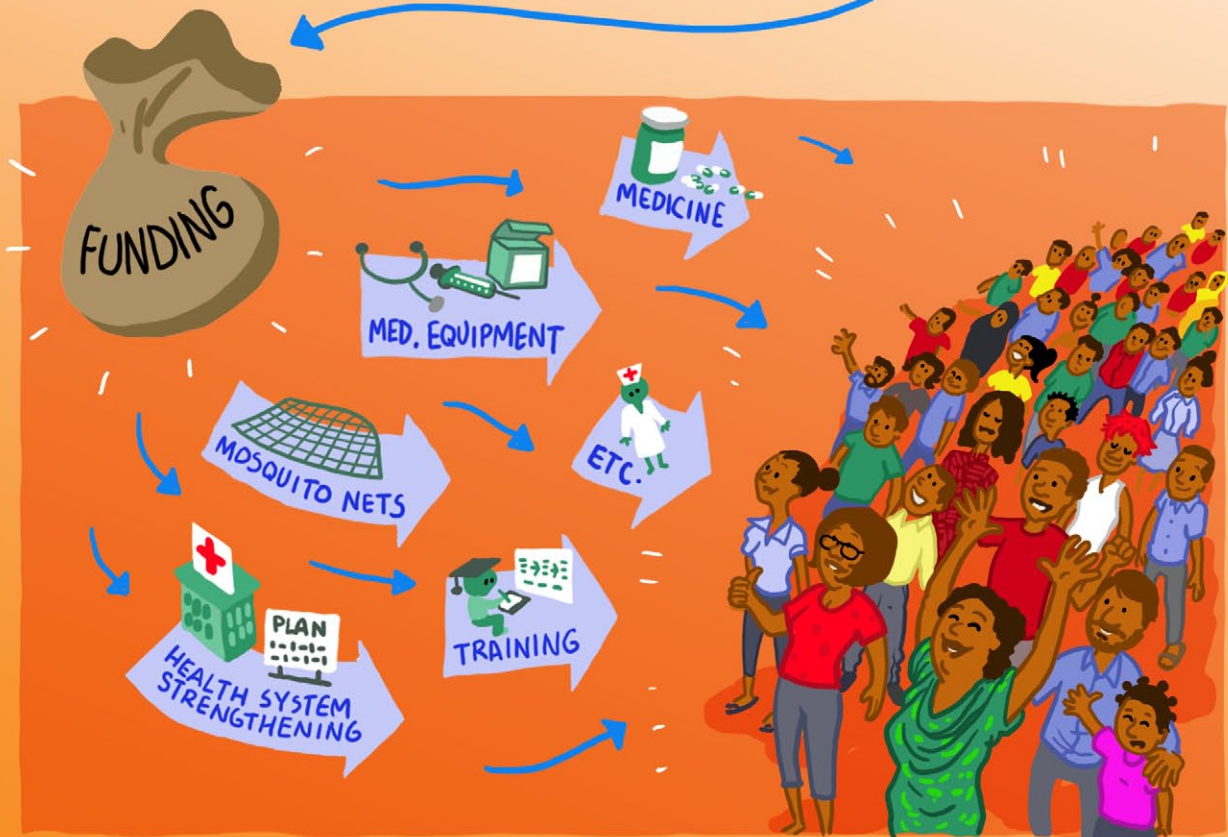
THEN THE GLOBAL FUND'S **GRANT APPROVALS COMMITTEE** REVIEWS THE IMPROVED CONCEPT NOTE:



THEN
GRANT-MAKING
BEGINS, TO DEFINE
THE AGREED TARGETS,
ACTIVITIES AND
COSTS:



FINALLY, THE
GLOBAL FUND BOARD
APPROVES THE GRANT



SO...

...HOW DO WE GET STARTED?



1.



FIND YOUR NATIONAL STRATEGIC PLAN

2.



PARTICIPATE IN COUNTRY DIALOGUE WITH YOUR CCM, SO YOUR NEEDS AND SUGGESTED INTERVENTIONS ARE CONSIDERED.

3.



BE AMBITIOUS - GO FOR STRONG IMPACT

4.



DISCUSS NEEDS WITH GLOBAL FUND STAFF

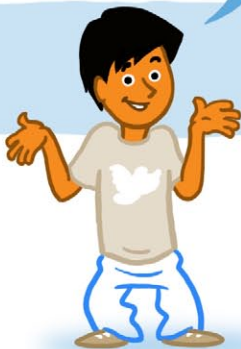
WHAT'S YOUR IDEA?



WHERE CAN I
LEARN MORE?

HERE:

WWW.THEGLOBALFUND.ORG/EN/FUNDINGMODEL



The Global Fund
To Fight AIDS, Tuberculosis and Malaria

PRODUCED FOR GLOBAL FUND
BY BIGGERPICTURE.DK